

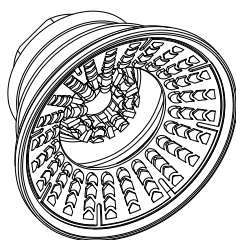
Bellows Suction Cups MAB HT1/HT2

Suction area (ϕ)30 mm to 100 mm

Bellows Suction Cups MAB HT1/HT2



System design Bellows Suction Cups MAB HT1/HT2



Introduction and application

- ◆ Round bellows suction cup with 1.5 folds for handling planar and curved workpieces or thermoformed plates. MAB HT1 handling of hot metal sheets up to 170° C, MAB HT2 handling of hot metal sheets up to 250° C
- ◆ Suitable for the automatic production line, handling the pre-formed steel plate, and the wave can perfectly fit the surface of the workpiece.
- ◆ The positioning of the handling process is accurate, and unloading of parts after forming.
- ◆ Handling of thin aluminum sheets without deformation or deep drawing.
- ◆ Provide extremely high lateral force grip in dusty and humid environments.

Design

- ◆ Wear-resistant material bellows suction cup with special pattern design and internal support structure
- ◆ Suction cup vulcanized to the connection nipple (very high strength)
- ◆ The surface design of the special structure provides a high-performance gripping force

Ordering Guide Bellows Suction Cups MAB HT1/HT2

Item no.	Suction area ϕ [mm]	Material and Shore hardness	Connection thread
MAB HT1/HT2	30 to 100	HT1-60 HT2-65	G1/4-IG G1/4-AG G3/8-AG G3/8-IG

Note: MAB HT1/HT2 AG=external thread (M) IG=internal thread (F)

Ordering Data Bellows Suction Cups MAB HT1

Type	Dimensions [mm]					rectangular adapter
	G1/4"-M	G1/4"-F	G3/8"-M	G3/8"-F		
MAB 30 HT1-60	90.02.01.00514	90.02.01.00522	90.02.01.00530	90.02.01.00538		90.02.01.00626
MAB 40 HT1-60	90.02.01.00515	90.02.01.00523	90.02.01.00531	90.02.01.00539		90.02.01.00627
MAB 50 HT1-60	90.02.01.00516	90.02.01.00524	90.02.01.00532	90.02.01.00540		90.02.01.00628
MAB 60 HT1-60	90.02.01.00517	90.02.01.00525	90.02.01.00533	90.02.01.00541		90.02.01.00629
MAB 80 HT1-60	90.02.01.00518	90.02.01.00526	90.02.01.00534	90.02.01.00542		90.02.01.00630
MAB 100 HT1-60	90.02.01.00519	90.02.01.00527	90.02.01.00535	90.02.01.00543		90.02.01.00631

Bellows Suction Cups MAB HT1/HT2

Suction area (ϕ)30 mm to 100 mm

Ordering Data Bellows Suction Cups MAB HT2

Type	Dimensions[mm]		
	G1/4"-M	G1/4"-F	G3/8"-F
MAB 30 HT2-65	90.02.01.00546	90.02.01.00552	90.02.01.00558
MAB 40 HT2-65	90.02.01.00547	90.02.01.00553	90.02.01.00559
MAB 50 HT2-65	90.02.01.00548	90.02.01.00554	90.02.01.00560
MAB 60 HT2-65	90.02.01.00549	90.02.01.00555	90.02.01.00561
MAB 80 HT2-65	90.02.01.00550	90.02.01.00556	90.02.01.00562

Technical Data Bellows Suction Cups MAB HT1

Type	Suction force [N]	Pull-off force [N]	Lateral force [N]	Volume [cm ³]	Min. curve radius [mm](convex)	Recom.internal hose diameter d[mm]
MAB 30 HT1-60	22	33	30	5.9	40	4
MAB 40 HT1-60	38	59	36	7.0	40	4
MAB 50 HT1-60	53	87	55	11.5	50	4
MAB 60 HT1-60	82	130	82	24.0	65	6
MAB 80 HT1-60	135	221	145	56.5	75	6
MAB 100 HT1-60	190	357	220	92.5	90	6

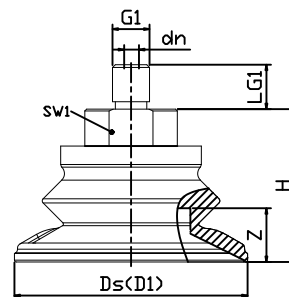
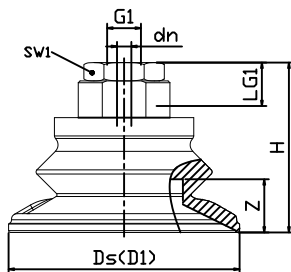
Technical Data Bellows Suction Cups MAB HT2

Type	Suction force [N]	Pull-off force [N]	Lateral force [N]	Volume [cm ³]	Min. curve radius [mm](convex)	Recom.internal hose diameter d[mm]
MAB 30 HT2-65	22	33	29	5.6	40	4
MAB 40 HT2-65	38	59	34	7.0	40	4
MAB 50 HT2-65	53	91	102	18.9	25	6
MAB 60 HT2-65	82	136	126	32.0	30	6
MAB 80 HT2-65	135	238	217	75.4	40	6

Design Data Bellows Suction Cups MAB HT1

MAB HT1 30 to 100 IG

MAB HT1 30 to 100 AG



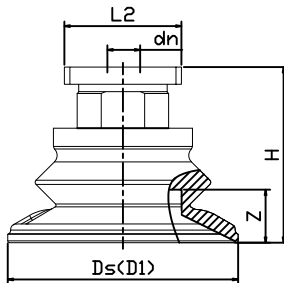
Bellows Suction Cups MAB HT1/HT2

Suction area (ϕ)30 mm to 100 mm



Design Data Bellows Suction Cups MAB HT1

MAB HT1 30 to 100 RA



Type	Dimensions[mm]									
	d	dn	Ds	Dmax(s)	G1	H	LG1	L4	SW1	Z(Stroke)
MAB30HT1-60G1/4-AG	32	4.0	31	34	G1/4"-M	28.0	10.0	-	17	9.0
MAB30HT1-60G1/4-IG	32	4.0	31	34	G1/4"-F	28.0	12.0	-	17	9.0
MAB30HT1-60G3/8-AG	32	4.0	31	34	G3/8"-M	28.0	10.0	-	17	9.0
MAB30HT1-60G3/8-IG	32	4.0	31	34	G3/8"-F	44.0	9.5	-	22	9.0
MAB30HT1-60RA	32	4.0	31	34	-	31.2	-	31.8	-	9.0
MAB40HT1-60G1/4-AG	32	4.0	40	45	G1/4"-M	28.8	10.0	-	17	10.0
MAB40HT1-60G1/4-IG	32	4.0	40	45	G1/4"-F	28.8	12.0	-	17	10.0
MAB40HT1-60G3/8-AG	32	4.0	40	45	G3/8"-M	28.8	10.0	-	17	10.0
MAB40HT1-60G3/8-IG	32	4.0	40	45	G3/8"-F	44.8	9.5	-	22	10.0
MAB40HT1-60RA	32	4.0	40	45	-	31.2	-	31.8	-	10.0
MAB50HT1-60G1/4-AG	40	6.0	50	56	G1/4"-M	36.9	10.0	-	22	11.5
MAB50HT1-60G1/4-IG	40	6.0	50	56	G1/4"-F	42.0	20.0	-	22	11.5
MAB50HT1-60G3/8-AG	40	6.0	50	56	G3/8"-M	36.9	10.0	-	22	11.5
MAB50HT1-60G3/8-IG	40	6.0	50	56	G3/8"-F	36.9	15.0	-	22	11.5
MAB50HT1-60RA	40	6.0	50	56	-	36.6	-	31.8	-	11.5
MAB60HT1-60G1/4-AG	48	6.0	61	67	G1/4"-M	41.3	10.0	-	22	14.5
MAB60HT1-60G1/4-IG	48	6.0	61	67	G1/4"-F	46.3	20.0	-	22	14.5
MAB60HT1-60G3/8-AG	48	6.0	61	67	G3/8"-M	41.3	10.0	-	22	14.5
MAB60HT1-60G3/8-IG	48	6.0	61	67	G3/8"-F	41.3	15.0	-	22	14.5
MAB60HT1-60RA	48	6.0	61	67	-	41.0	-	31.8	-	14.5
MAB80HT1-60G1/4-AG	64	6.0	81	89	G1/4"-M	49.9	10.0	-	22	22.1
MAB80HT1-60G1/4-IG	64	6.0	81	89	G1/4"-F	54.9	20.0	-	22	22.1
MAB80HT1-60G3/8-AG	64	6.0	81	89	G3/8"-M	49.9	10.0	-	22	22.1
MAB80HT1-60G3/8-IG	64	6.0	81	89	G3/8"-F	49.9	15.0	-	22	22.1
MAB80HT1-60RA	64	6.0	81	89	-	49.6	-	31.8	-	22.1
MAB100HT1-60G1/4-AG	77	6.0	101	110	G1/4"-M	56.6	10.0	-	22	25.8
MAB100HT1-60G1/4-IG	77	6.0	101	110	G1/4"-F	61.8	20.0	-	22	25.8
MAB100HT1-60G3/8-AG	77	6.0	101	110	G3/8"-M	56.6	10.0	-	22	25.8
MAB100HT1-60G3/8-IG	77	6.0	101	110	G3/8"-F	56.6	15.0	-	22	25.8
MAB100HT1-60RA	77	6.0	101	110	-	56.3	-	31.8	-	25.8

Combined Suction Cups

Vacuum Suction Cups

Composite Suction Cups

Special Grippers

Vacuum Gripping Systems

Mounting Elements

Vacuum Generators

Valve Technology

Switch And Monitoring

Vacuum Filters

Suction Cups for High-Temperature Applications

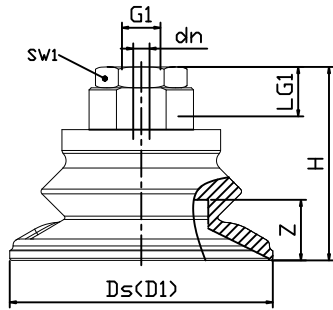


Bellows Suction Cups MAB HT1/HT2

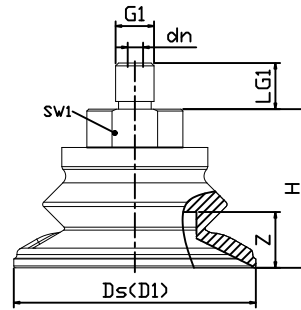
Suction area (ϕ)30 mm to 100 mm

Design Data Bellows Suction Cups MAB HT2

MAB HT2 30 to 80 IG



MAB HT2 30 to 80 AG



Type	Dimensions[mm]									
	dn	D1	Dmax(s)	Ds	G1	H	LG1	SW1	Z(Stroke)	
MAB 30 HT2-65 G1/4-AG	4.0	32	34	31	G1/4"-M	28.0	10.0	17	9.0	
MAB 30 HT2-65 G1/4-IG	4.0	32	34	31	G1/4"-F	28.0	12.0	17	9.0	
MAB 30 HT2-65 G3/8-IG	4.0	32	34	31	G3/8"-F	44.0	9.5	22	9.0	
MAB 40 HT2-65 G1/4-AG	4.0	32	45	40	G1/4"-M	29.0	10.0	17	10.0	
MAB 40 HT2-65 G1/4-IG	4.0	32	45	40	G1/4"-F	29.0	12.0	17	10.0	
MAB 40 HT2-65 G3/8-IG	4.0	32	45	40	G3/8"-F	44.0	9.5	22	10.0	
MAB 50 HT2-65 G1/4-AG	6.0	42	56	50	G1/4"-M	36.9	10.0	22	11.5	
MAB 50 HT2-65 G1/4-IG	6.0	42	56	50	G1/4"-F	41.9	20.0	22	11.5	
MAB 50 HT2-65 G3/8-IG	6.0	42	56	50	G3/8"-F	36.9	15.0	22	11.5	
MAB 60 HT2-65 G1/4-AG	6.0	50	67	61	G1/4"-M	41.3	10.0	22	14.5	
MAB 60 HT2-65 G1/4-IG	6.0	50	67	61	G1/4"-F	46.3	20.0	22	14.5	
MAB 60 HT2-65 G3/8-IG	6.0	50	67	61	G3/8"-F	41.3	15.0	22	14.5	
MAB 80 HT2-65 G1/4-AG	6.0	65	88	81	G1/4"-M	49.8	15.0	22	22.0	
MAB 80 HT2-65 G1/4-IG	6.0	65	88	81	G1/4"-F	54.8	15.0	22	22.0	
MAB 80 HT2-65 G3/8-IG	6.0	65	88	81	G3/8"-F	49.8	15.0	22	22.0	

- Combined Suction Cups
- Vacuum Suction Cups
- Composite Suction Cups
- Special Grippers
- Vacuum Gripping Systems
- Mounting Elements
- Vacuum Generators
- Valve Technology
- Switch And Monitoring
- Vacuum Filters